

TOKAMAK BUILDING

Shipment unloading area

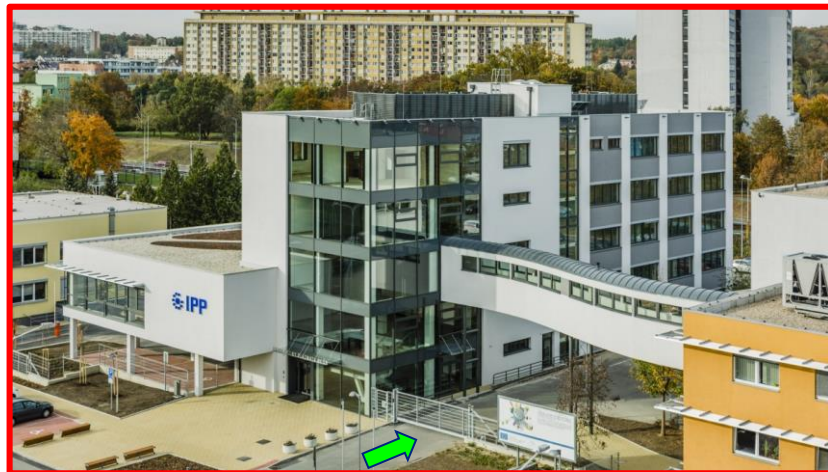
CU_CUPG-01_PTD Technical Specification - Annex No. 8 - Shipment unloading area

Rev. 2 30.5.2023

direction Kobylišy

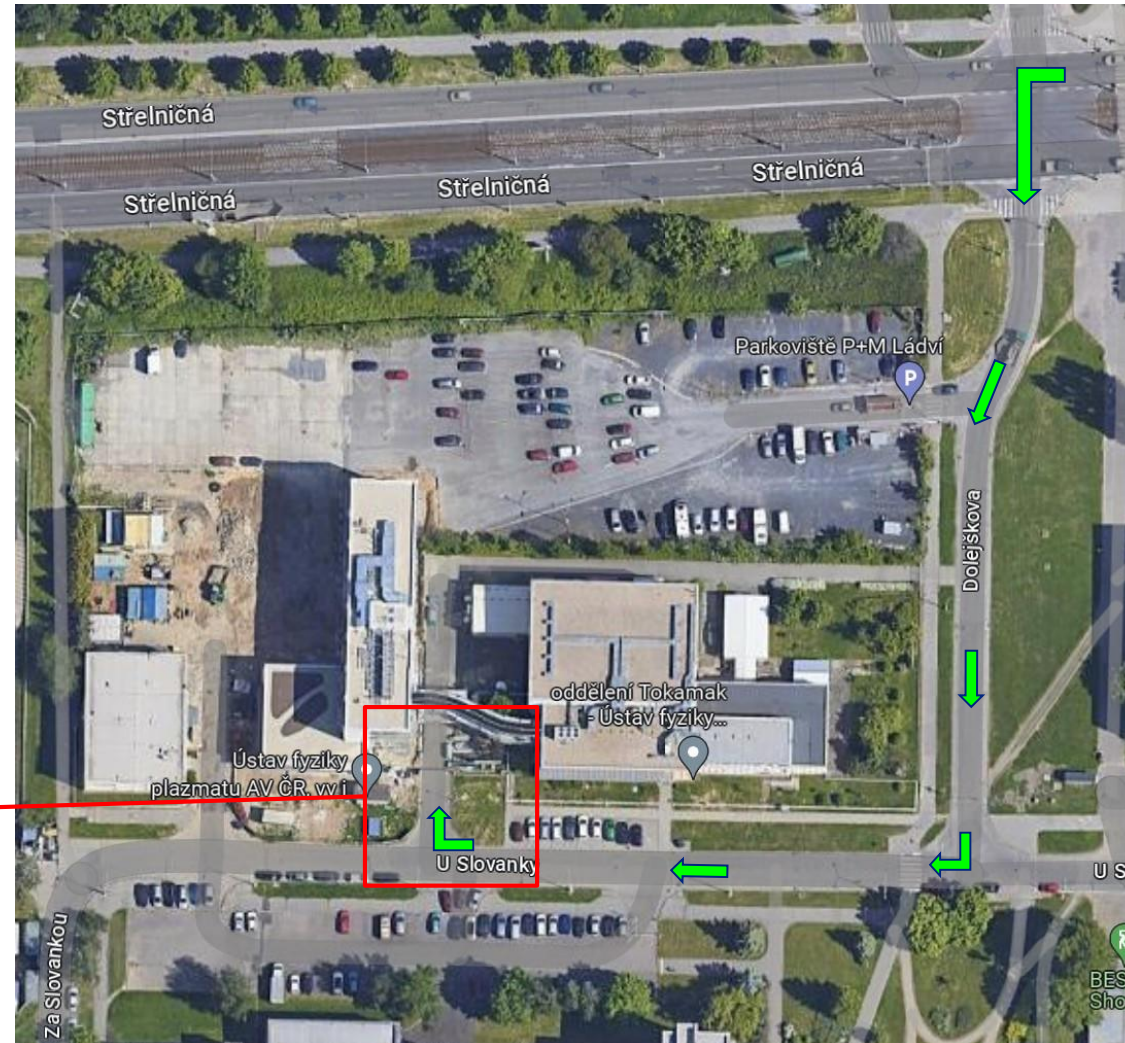


Institute of Plasma Physics of the CAS
TOKAMAK building
U Slovanky 1770/3
182 00 Praha 8-Libeň
Czech Republic

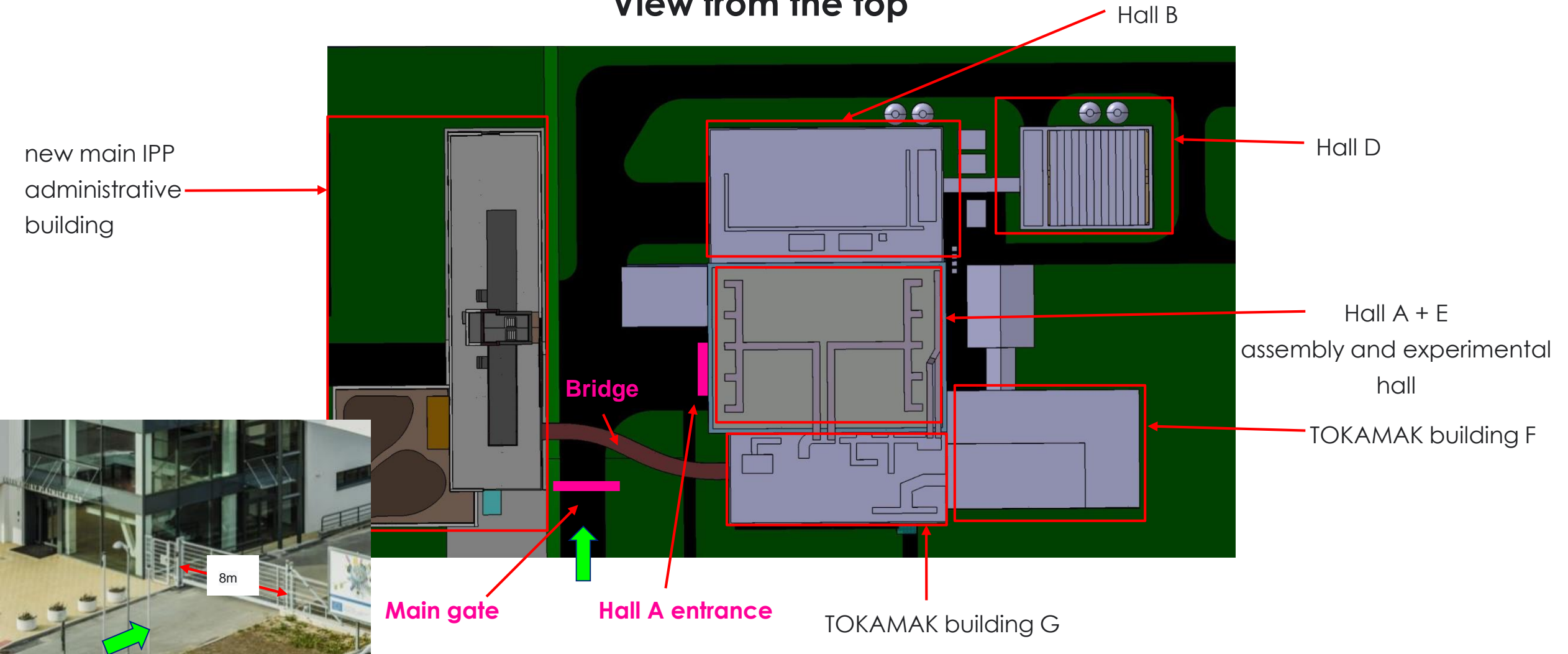


Main gate

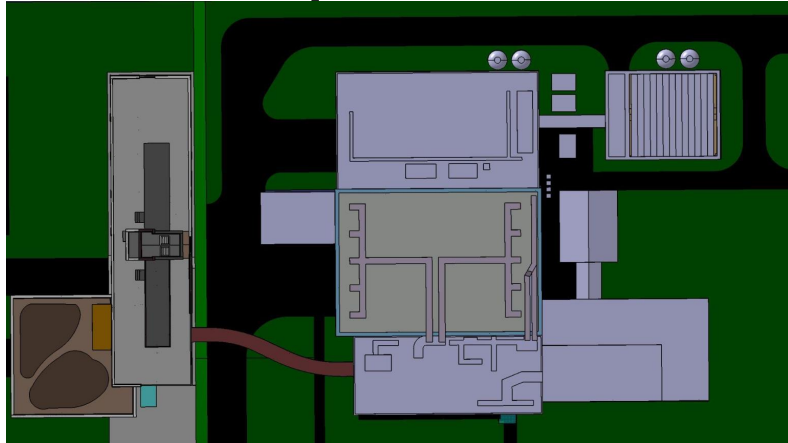
direction Ládví



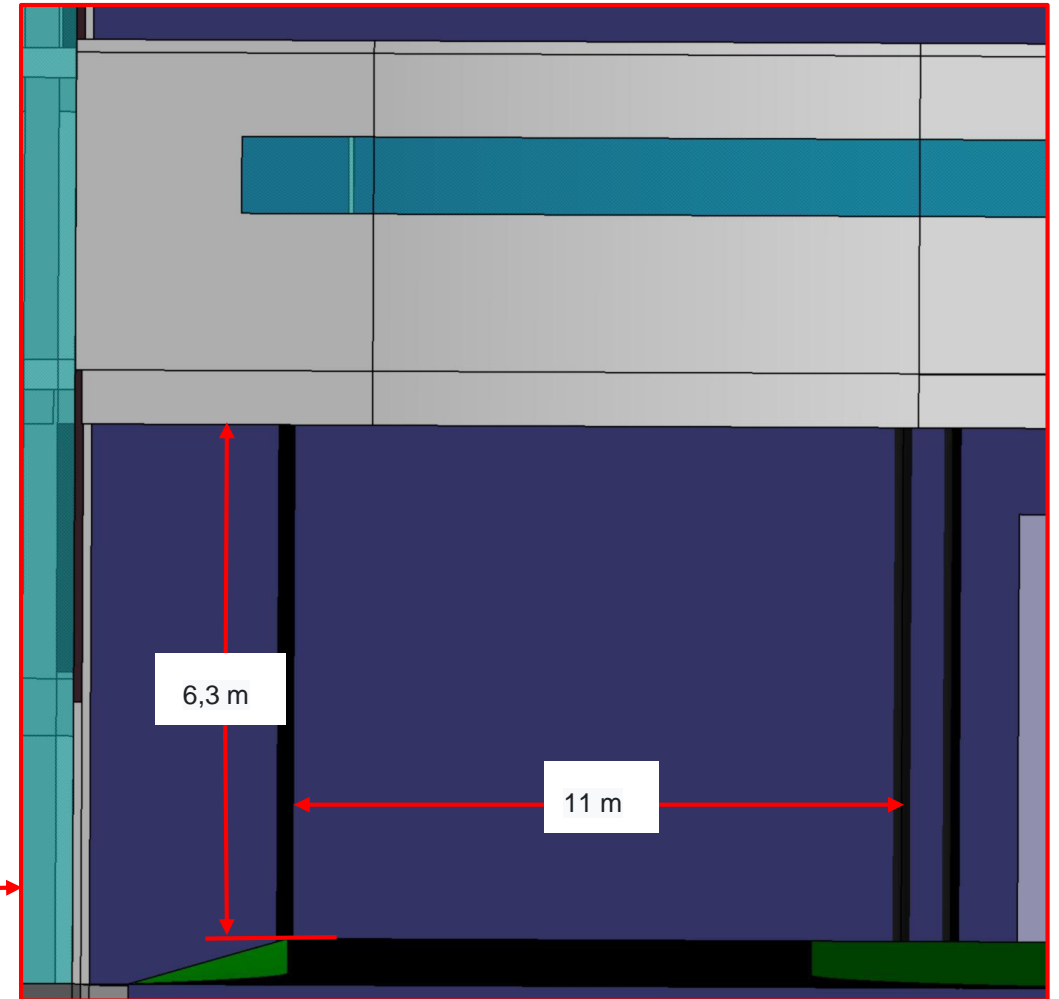
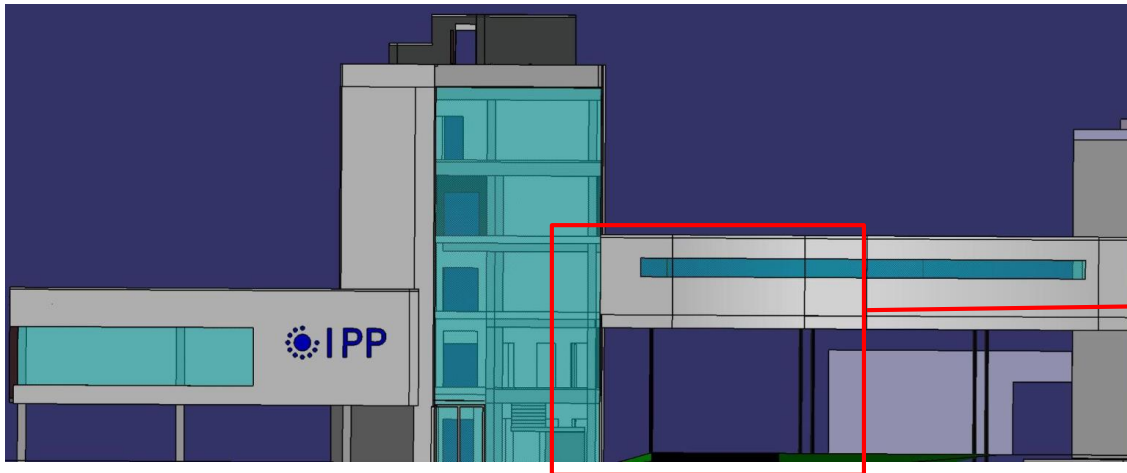
View from the top



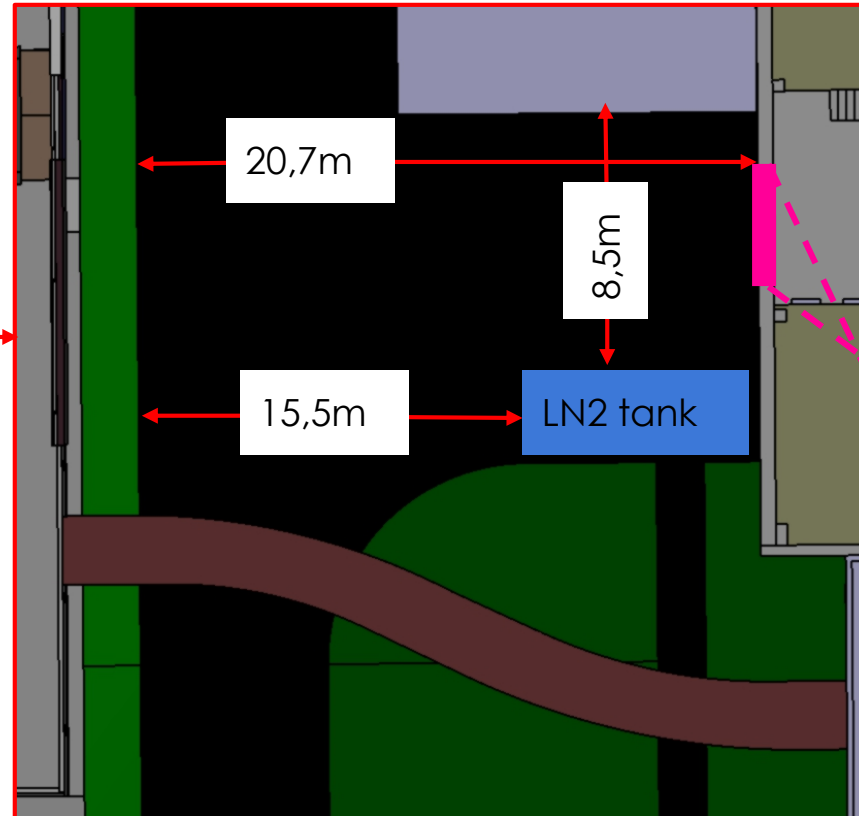
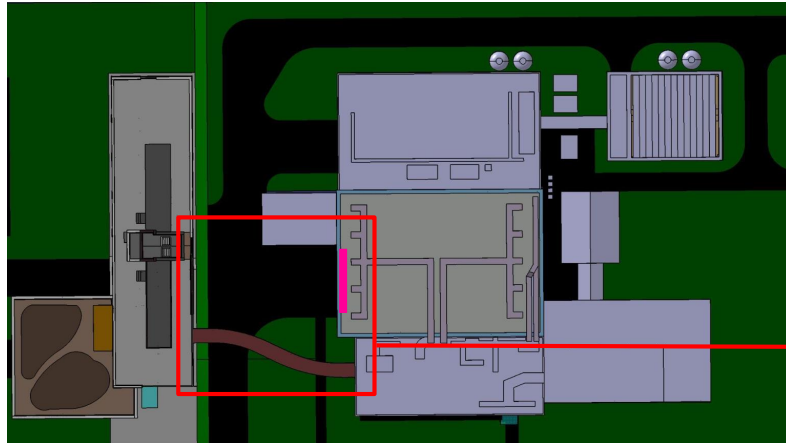
Top view



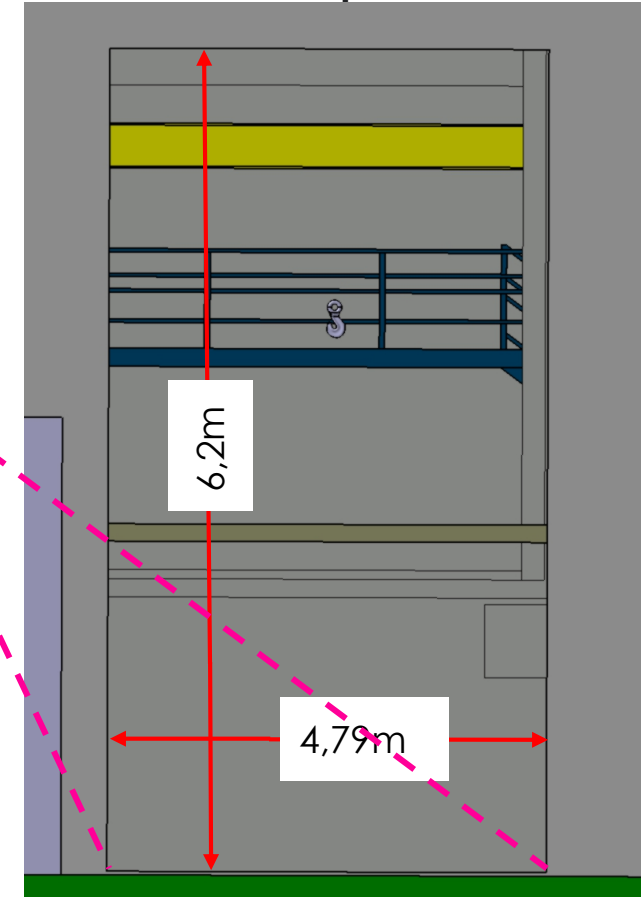
Front view



Top view

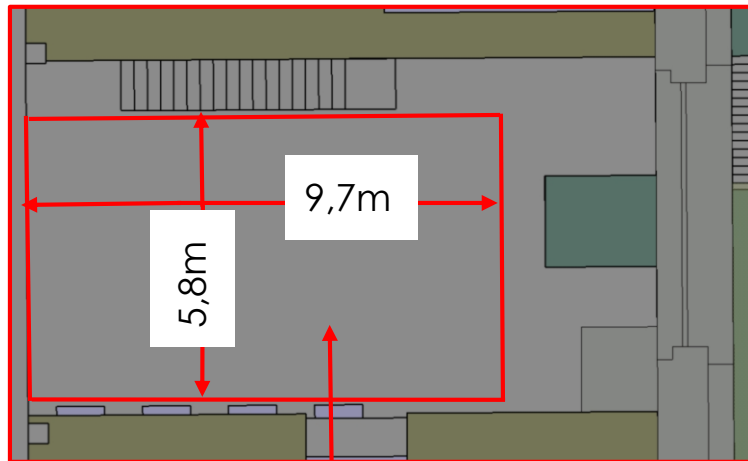


Front view Hall A
entrance exp. hall A

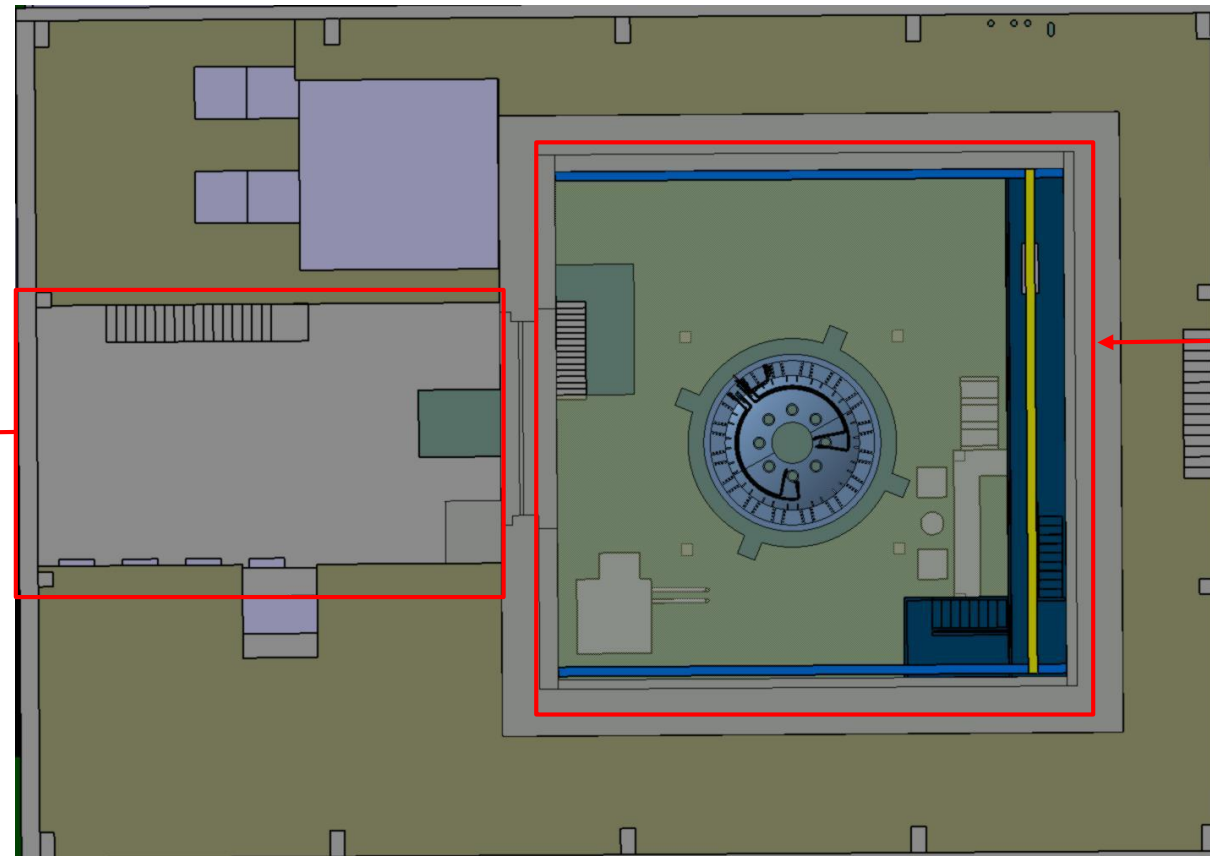


Top view Hall A + E

Hall A Assembly hall



unloading area - reinforced floor



Hall E
experimental hall